



FOR SALE

£315,000

21 Towpath Mead Meryl Road,
Southsea, PO4 8LA.

Tenure: Freehold

ESTATE  AGENTS

LAWSON ROSE

PROPERTY DESCRIPTION

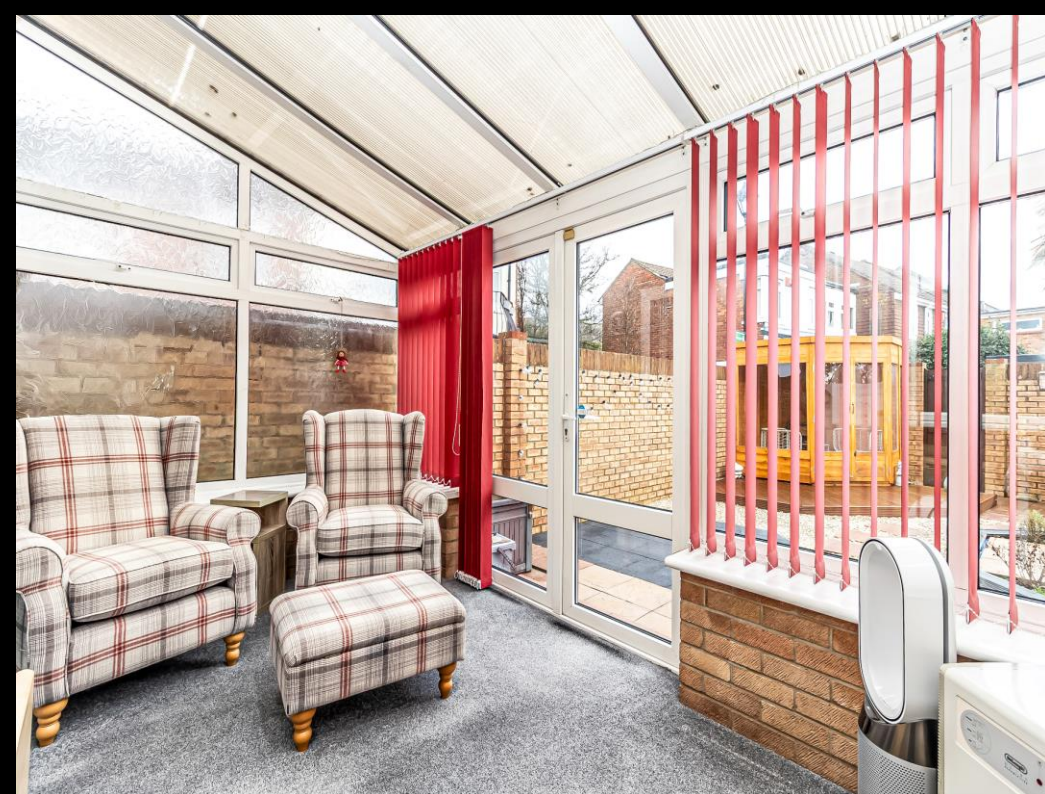
Lawson Rose are delighted to bring to the market this modern and well-presented end-of-terrace home, complete with a garage and parking, tucked away in a quiet cul-de-sac within the ever-popular Milton area. Located in Towpath Mead, this attractive property would make an ideal family home. The accommodation begins with a welcoming porchway, leading to a useful storage area and a convenient ground floor W.C. The fitted kitchen flows through to a generous living room – the true heart of the home – which benefits from sliding doors opening into a bright rear conservatory, enjoying pleasant views over the sizable, enclosed rear garden. Upstairs, the first floor offers three bedrooms, including two well-proportioned doubles and a third bedroom currently used as a home office, alongside a fitted family bathroom suite. Further benefits include double glazing, gas central heating throughout, rear pedestrian access to the garden, and the added advantage of a garage and off-road parking. With so much on offer, we strongly recommend an internal viewing. For further information or to arrange your appointment, please contact a member of our sales team today

Material Information:

- Construction: Brick Built
- Electricity Supply: Alternating Current
- Heating: Gas Central Heating
- Water Supply: Mains Water Supply
- Sewage: Mains Sewage
- Broadband: Standard, Superfast Fibre and Gfast Fibre are available.
- Mobile: Ofcom Checker shows EE, Three, O2 and Vodafone all have voice and data availability in this area.
- Garage & Allocated Off Road Parking Space
- Council Tax: Portsmouth City Council – Band C
- Flood Risk – Low Risk (Stated on the Gov.uk portal)

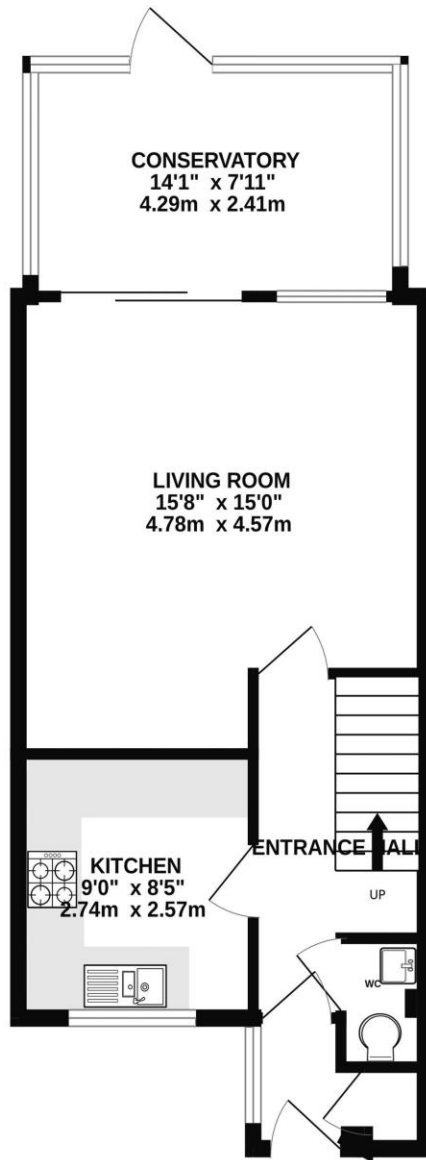


02392 367 779 - contactus@lawsonrose.com
131 Winter Road, Southsea, PO4 8DS

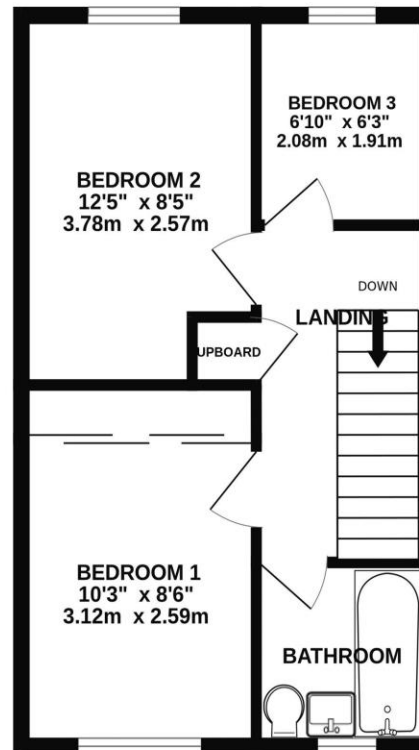




GROUND FLOOR



1ST FLOOR



Please note that none of the services or appliances have been tested by Lawson Rose Estate Agents.